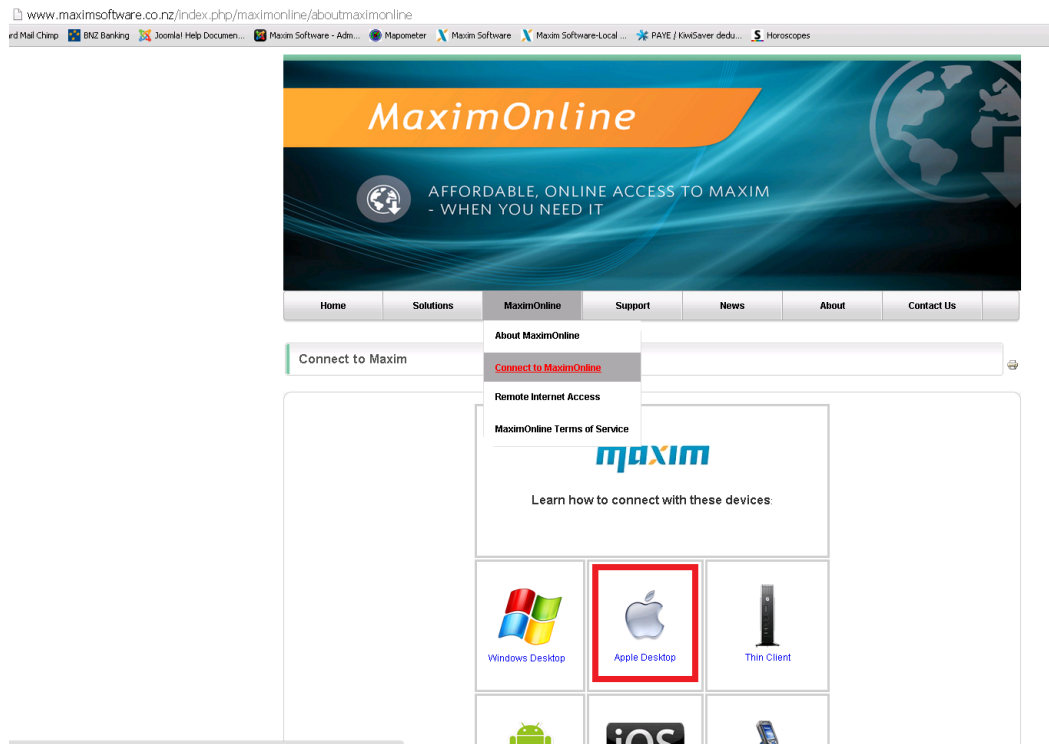


Log on to Maxim Software Website www.maximsoftware.co.nz

Navigate to **MaximOnline** Tab then from the Drop Down - **Connect to MaximOnline**

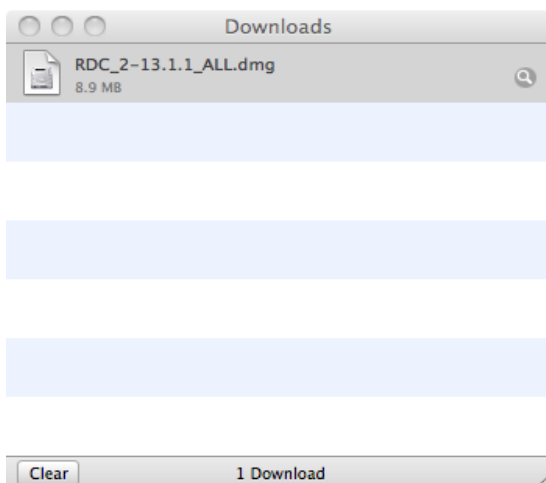


Click on the Apple Desktop

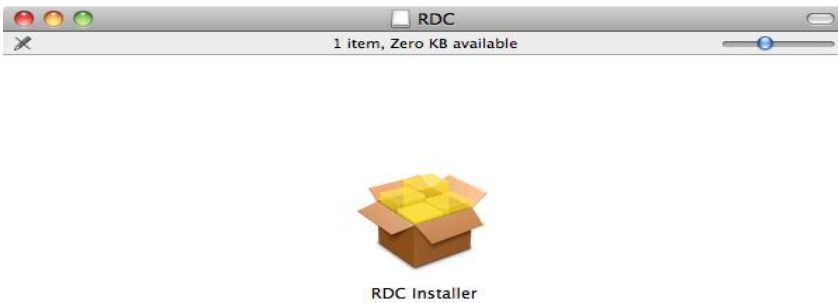
CLICK on the **Download the Remote Desktop Connection for Apple MAC Clients**

Once the download is completed;

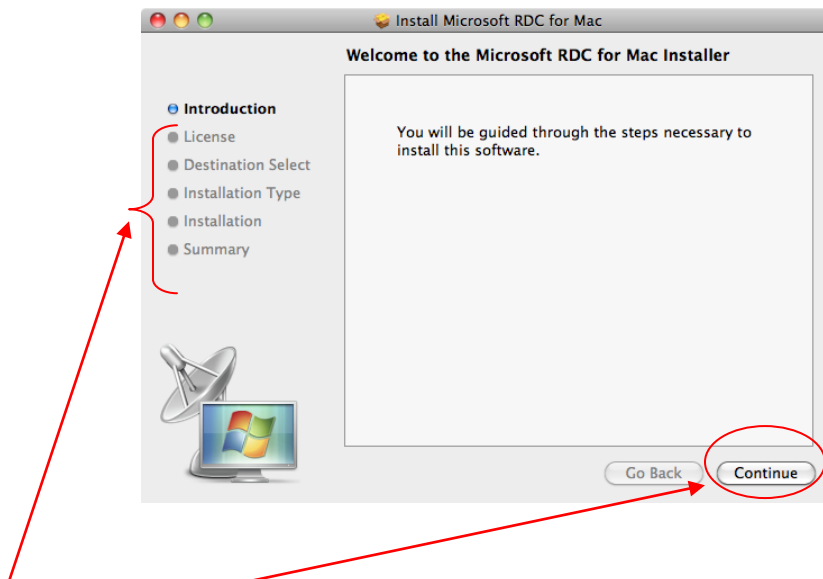
Select the RDC_2-13.1.1-All.dmg file from your **Downloads** folder



This will bring you to the **RDC** installer folder select this icon.



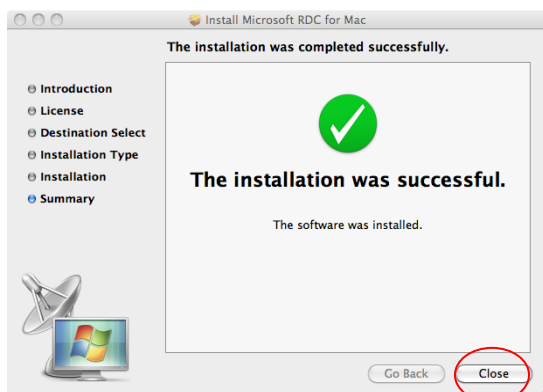
The installation guide for the **RDC** will appear



Select *Continue* through the Introduction and Licenses

Agree to the License box,

CLICK *Install at Destination Select/Installation Type*. A box requesting your system password may pop up – if so, enter you systems password and continue.



Close the Installation box.

There will now be two new Icons: **RDC** on your desktop: and an icon of a **Satellite Dish** (**Remote Access Icon**) on your tool bar.



Click on the **Remote Access Icon (Satellite Dish)**, this will bring up a window to connect to MaximOnline and will be your connection to MaximOnline for future use.

Connecting to MaximOnline

Once you have selected the Remote Access Icon a new window will appear requesting MaximOnline's connection address: Enter **go.maximonline.co.nz:10000**



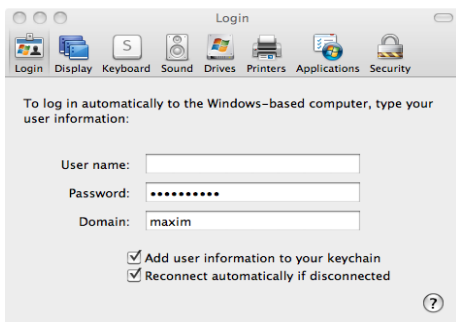
Before Clicking on Connect we have to ***set up your preferences:***

Go to the file tool bar at the top of your screen

Select **RDC** (next to the apple icon), a drop down box will appear

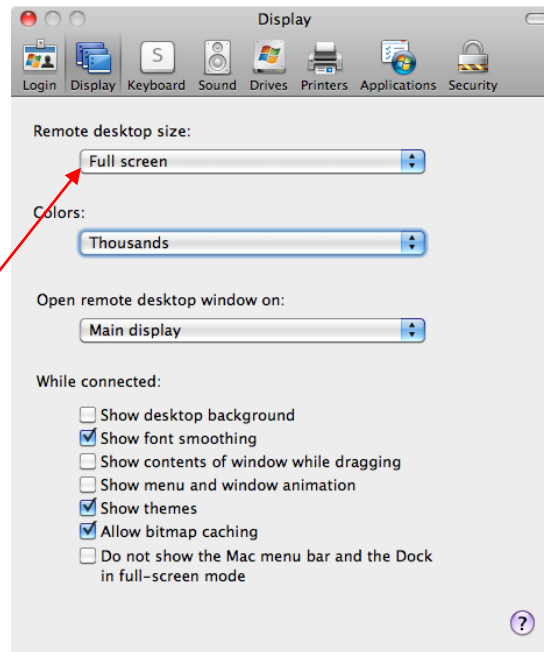
Select preferences.

Login Preferences



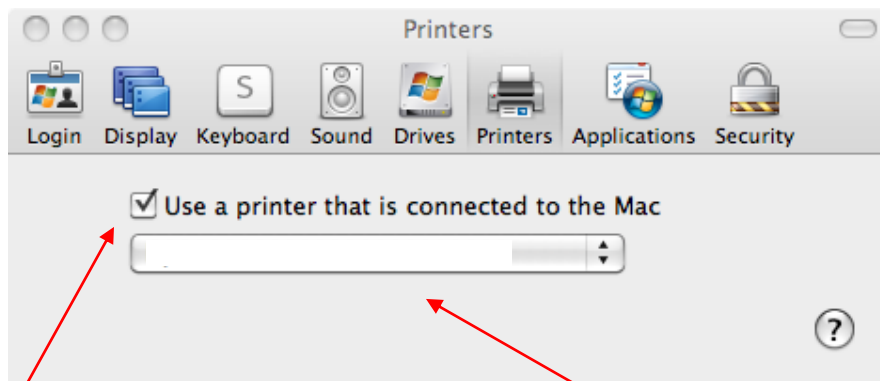
Enter your *User name* and *Password*
AND
TICK *Add user information to your Keychain*
AND
TICK *Reconnect automatically if disconnected.*

Display Tab



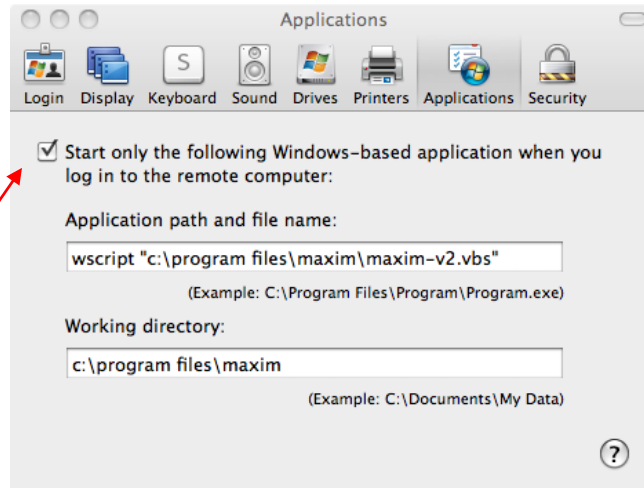
Change your remote desktop size to **Full Screen** (this can be changed anytime to suit your individual Workstation)

Printers



Select Use a printer that is connected to the Mac, and **choose your printer's name**

Applications



✓ **TICK:** *Start only the following Windows-based application when you log in to the remote computer:*

Application path and file name: wscript "c:\program files\maxim\maxim-v2.vbs"

Working directory: c:\program files\maxim

PLEASE NOTE: When entering the program paths and folder names, make sure you include the spaces and speech marks!

Security



SELECT: Warn me if authentication fails.

Close the *Applications Box* once all your preferences have been entered.



Now you can press **Connect**.



Your screen will bring you into the blue MaximOnline window, enter your **Username** (*intials*) and press **OK**.

This will bring you to the MaximOnline Main Menu.

Congratulations you are now connected to MaximOnline!